





PROPOSED SECONDARY EMERGENCY ACCESS

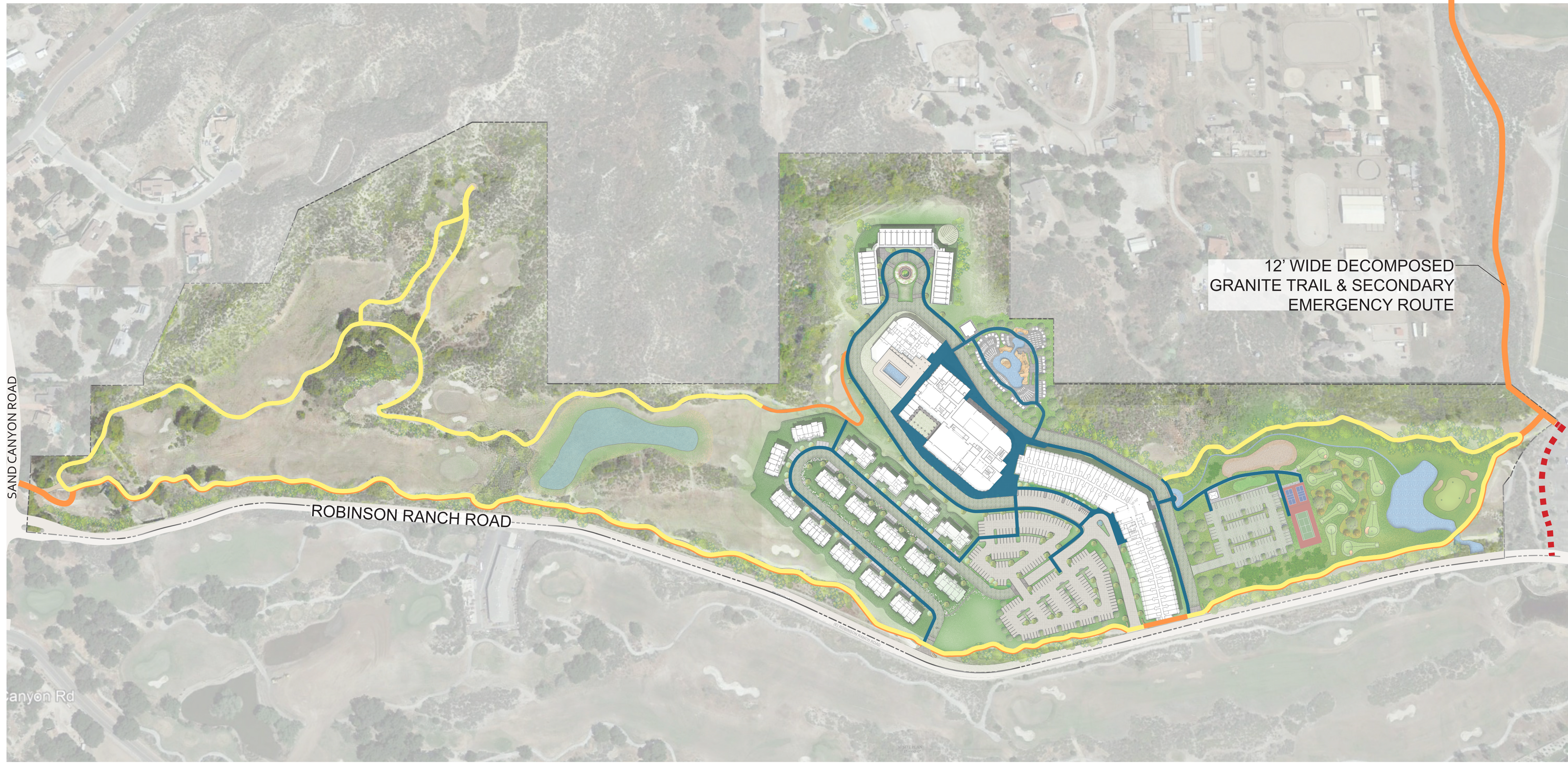
MAY 13, 2021



- ① Club House Parking Lot
- ↓
- ② West Side of Driving Range
- ↓
- ③ Oak Springs Canyon Road
- ↓
- ④ Lost Canyon Road
- ↓
- ⑤ Sand Canyon Road

-  PROPOSED SECONDARY EMERGENCY ACCESS
-  ROBINSON RANCH ROAD

OAK SPRINGS CANYON ROAD



12' WIDE DECOMPOSED GRANITE TRAIL & SECONDARY EMERGENCY ROUTE

SAND CANYON ROAD

ROBINSON RANCH ROAD

canyon Rd

- HIKING TRAIL (EXISTING 9' WIDE CART PATH)
- NEW DECOMPOSED GRANITE TRAIL (3' WIDE)
- PEDESTRIAN WALKWAYS
- VEHICLE ACCESS TO SECONDARY EMERGENCY ROUTE