

## Attachment #1.

Wildfire Evacuation Plan

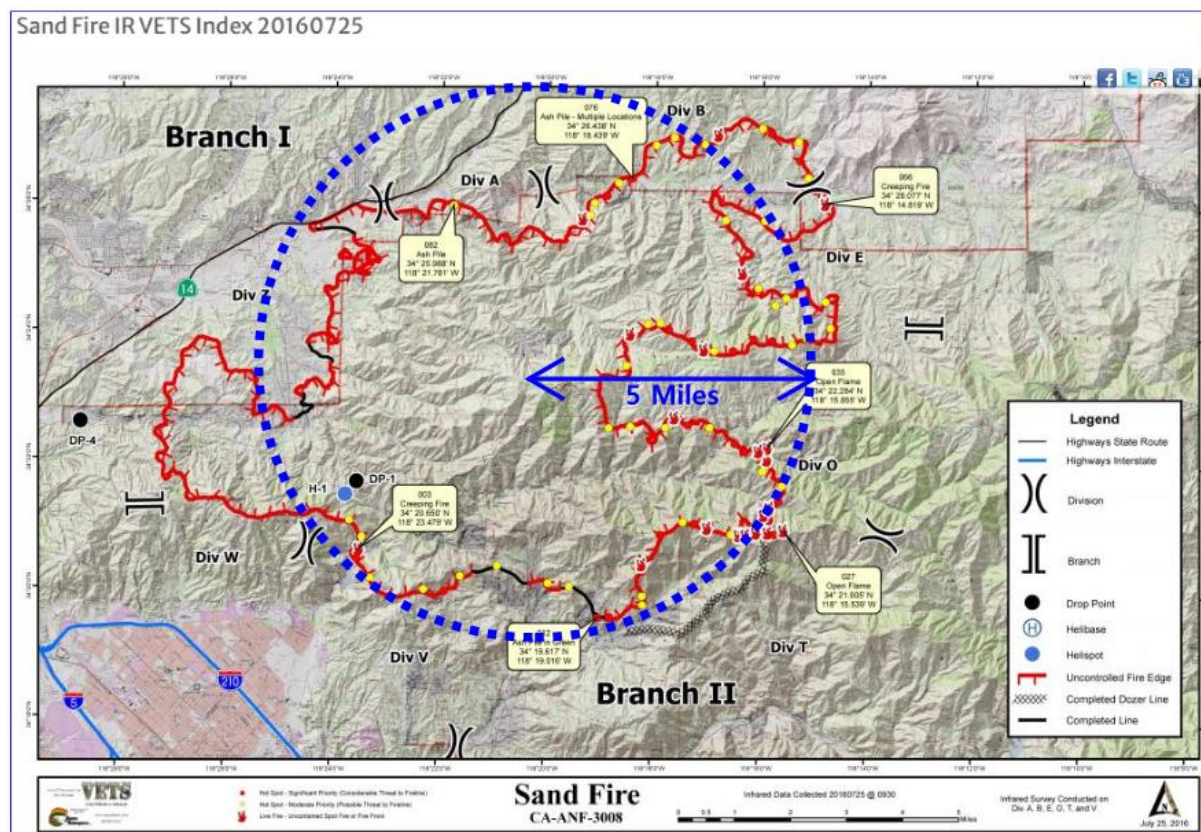
## 1. Review of Sand Fire 2016

## A) Timeline of Sand Fire 2016

- 1) The fire started around 2:10 p.m. on July 22, 2016 near the intersection Soledad Canyon Road and Sand Canyon Road.
- 2) A SigAlert was issued at 3:15 p.m. on the same day.
- 3) As of 12:25 a.m. next day, evacuations were mandatory from Bear Divide to the Los Angeles River Ranger Station at 12371 Little Tujunga Canyon Road, and voluntary from Gold Creek to the bottom of Camp 16.

## B) Time from start of fire till mandatory evacuation: approximately 10 hours

## C) Sand Fire status on July 25, 2016



## 2. Resort's Policy for Wildfire Evacuation

- A) In case of wildfire, evacuation of the Resort will be managed and controlled by security and safety officers who are on duty 24/7.
- B) Evacuation is implemented through evacuation routes in coordination and consultation with LACoFD, even prior to a mandatory evacuation order, except for emergency-responding personnel.
- C) A full evacuation will be completed within 4 hours upon the first information of wildfire which occurs within 4 miles from the Resort as shown on the map below. And therefore, it will not delay evacuations of residences of the community.
- D) Compliance with the emergency plan including the policy for wildfire evacuation will be notified to and agreed with signature by all the guests of the Resort when check-in.

