



# SITE PLAN

JUNE 30, 2021

SAND CANYON RESORT & SPA

(E) ROBINSON RANCH ROAD



SAND CANYON ROAD

canyon Rd

OPEN SPACE

ROBINSON RANCH ROAD

DETENTION BASIN

SPA GARDEN INN

SPA BUILDING

VILLAS

WEDDING GARDEN

FAMILY POOL

FUNCTION BUILDING

PLAYGROUND

MAIN HOTEL

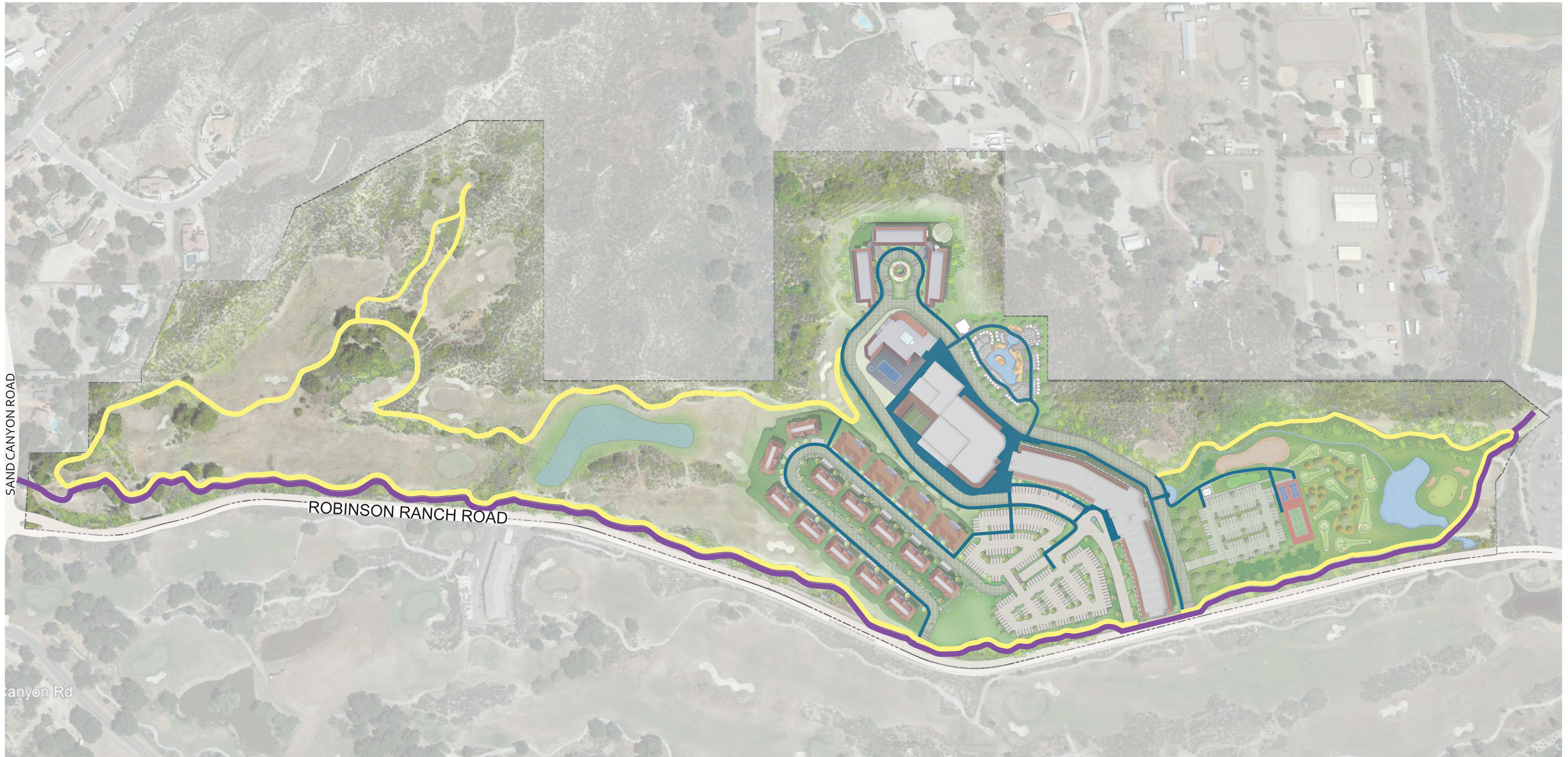
RECREATION AREA  
(OPEN TO THE PUBLIC)

PITCH & PUTT

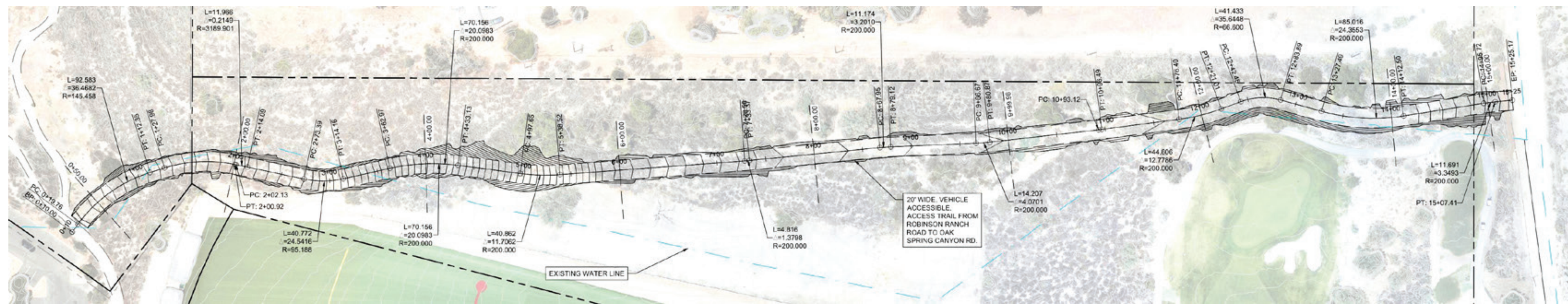
TENNIS & PICKLEBALL

DOG PARK

----- 25.16 ACRES OPEN SPACE






- HIKING TRAIL (EXISTING 9' WIDE CART PATH)
- NEW DECOMPOSED GRANITE TRAIL (3' WIDE)
- PEDESTRIAN WALKWAYS
- VEHICLE ACCESS TO SECONDARY EMERGENCY ROUTE



A

- ① Club House Parking Lot
- ↓
- ② West Side of Driving Range
- ↓
- ③ Oak Springs Canyon Road
- ↓
- ④ Lost Canyon Road
- ↓
- ⑤ Sand Canyon Road

-  20' NEW DG TRAIL (CAN BE USE FOR EMERGENCY)
-  3' NEW DG TRAIL NEXT TO EXISTING GOLF CART PATH
-  VEHICLE ACCESS TO SECONDARY EMERGENCY ROUTE



SAND CANYON RESORT & SPA

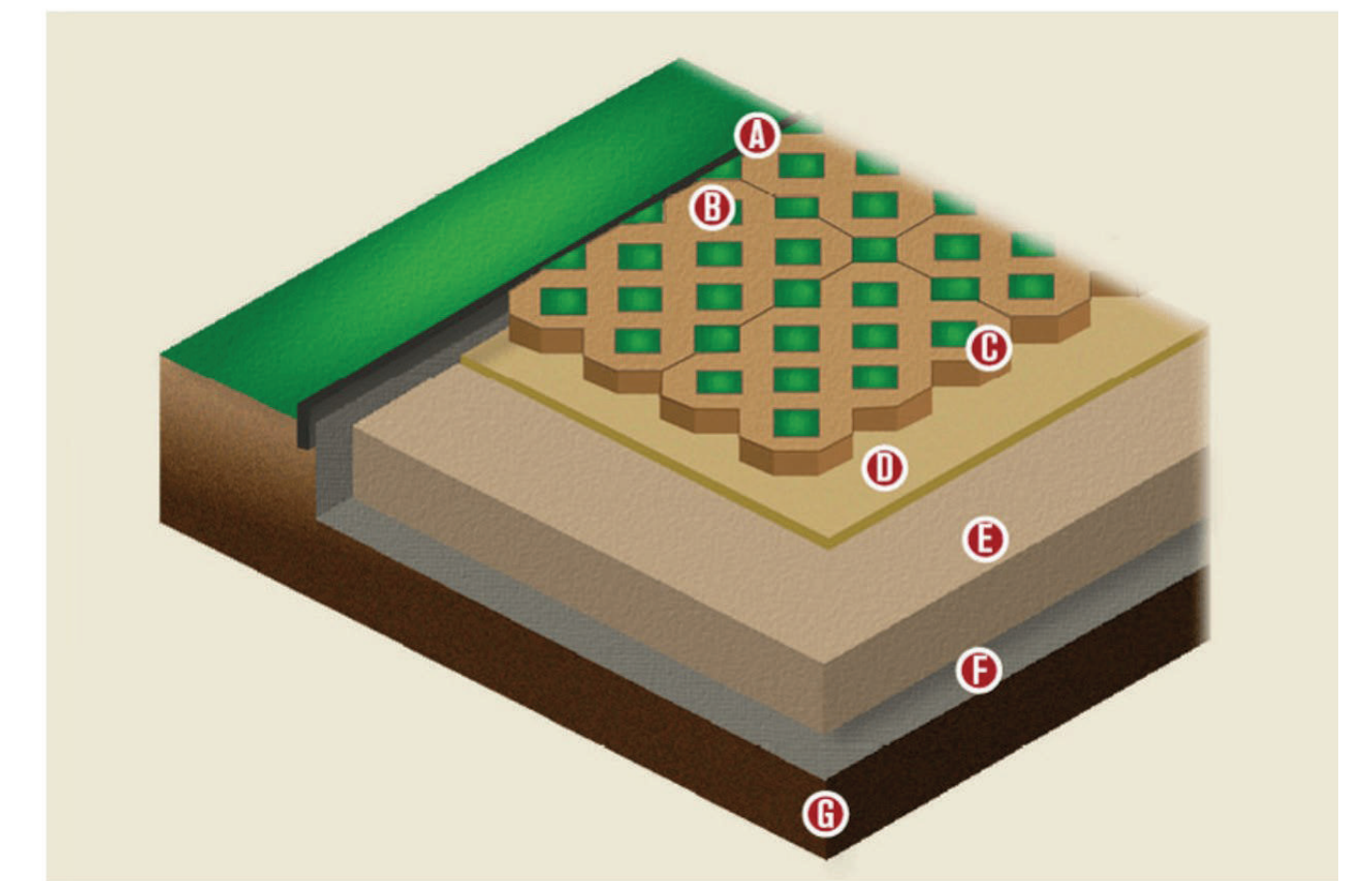


**TURF BLOCK PAVING SYSTEM**

Precast concrete paver system that allows sod to grow through it's openings creating a highly permeable surface.

It is suitable as a driving surface including for maintenance and emergency vehicles.

When fully developed will have the appearance of a grassy field.



- A Edge restraint - may be wood, metal, plastic, or concrete
- B Soil mix with seed or sod plugs
- C Turfstone - concrete grid
- D Bedding sand - graded sand meets ASTM C 33 Moist Washed Concrete Sand
- E Base layer - graded rock class II or 3/4 minus mix compacted
- F Geotextile - filter fabric as needed per site conditions
- G Compacted native soils



TURF BLOCK



<b>VEHICLE PARKING</b>	
PARKING PROVIDED	<b>400</b>
<b>BICYCLE PARKING REQUIRED</b>	
SHORT TERM BICYCLE PARKING (5% of 400 Vehicle Parking Spaces)	<b>20</b>
LONG TERM BICYCLE PARKING (5% of 400 Vehicle Parking Spaces)	<b>20</b>
<b>TOTAL BICYCLE PARKING REQ'D</b>	<b>40</b>
<b>TOTAL BICYCLE PARKING PROVIDED</b>	<b>54</b>

- PARKING LOTS
- BICYCLE RACK (2 BIKES) - SHORT TERM
- BICYCLE RACK (6 BIKES) - SHORT TERM
- BICYCLE RACK (10 BIKES) - LONG TERM